

How big a cabinet is needed for lead-acid batteries in communication base stations



Overview

Large base stations typically have dedicated battery rooms or cabinets, using large-capacity (e. Telecom battery cabinets are engineered to safeguard batteries from environmental hazards while ensuring optimal performance. Key features include: Want OEM lithium forklift batteries at wholesale prices?

Check here. Environmental Protection: Designed to shield batteries from extreme weather. Configure your UPS backup power system with data center cabinets for pure lead stationary batteries. In addition to our premium, reliable stationary batteries, we carry a full line of. The cabinets covered by the technical specification have been designed to contain the hermetic lead-acid electric accumulator batteries. The construction characteristics of the recombination type lead-acid electric accumulators (valve-regulated hermetic accumulators); the absence of acid fumes and. Have you ever calculated how much floor space your battery cabinets truly require?

In Q2 2024, a surprising 68% of industrial facilities reported underutilized energy storage capacity directly linked to improper dimension planning. However, their applications extend far beyond this. They are also frequently used.

How big a cabinet is needed for lead-acid batteries in communication



A Comprehensive Guide to Telecom Battery Cabinets

How do I choose the right telecom battery cabinet? Consider factors such as size, capacity, material quality, ventilation needs, security features, and compatibility with your existing ...

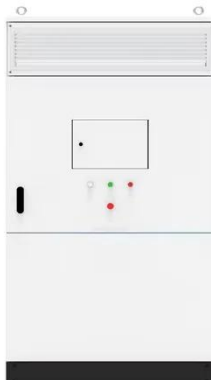
[Get Price](#)

BATTERY CABINETS CATALOGUE

The construction characteristics of the recombination type lead-acid electric accumulators (valve-regulated hermetic accumulators); the absence of acid fumes and the virtual absence of gaseous ...



[Get Price](#)



Telecommunication Battery

Large base stations typically have dedicated battery rooms or cabinets, using large-capacity (e.g., 500Ah, 1000Ah) 2V lead-acid battery packs or large lithium-ion battery packs.

[Get Price](#)

What is a lead-acid battery energy storage cabinet for a ...

A Site Battery Storage Cabinet is a modular energy backup unit specifically designed for telecom base stations. It houses lithium-ion batteries (typically LFP), BMS, EMS, and optional thermal

[Get Price](#)



Battery Module Cabinet Guide: Definition, Uses & Design

If you've ever wondered how large buildings, data centers, or telecom networks keep running even when the power goes out, the answer often lies in battery module cabinets.

[Get Price](#)

BATTERY ROOM REGULATIONS AND SAFETY BY: BOB ...

Batteries of the non-seal type shall be located in enclosures with outside vents or in well ventilated rooms, so arranged as to prevent the escape of fumes, gases, or electrolyte spray into other areas.

[Get Price](#)



What Are Telecom Battery Cabinets and How Do They Ensure ...



Telecom battery cabinets are specialized enclosures housing backup batteries that provide uninterrupted power to telecommunications infrastructure during outages. They ensure network ...

[Get Price](#)

C & D Technologies , Stationary Battery Cabinets

Selecting the best cabinets for C& D pure lead batteries depends on UPS model, desired runtime, room layout, and other considerations. C& D experts with extensive knowledge of data center ...

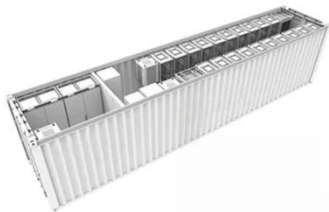


[Get Price](#)



 TAX FREE

1-3MWh
BESS



Battery Cabinet Dimensions Guide , Huijue Group E-Site

Specifying 823mm cabinet depth (versus standard 600mm) with rotating busbar assemblies. Result: 29% faster deployment with 18-year lifecycle assurance. Emerging phase ...

[Get Price](#)

Communication Base Station Battery Cabinets , Huijue Group E-Site

Behind every communication base station battery cabinet lies a complex engineering marvel supporting our hyper-connected world. As 5G deployments surge 78% YoY (GSMA 2023), these silent power ...

[Get Price](#)



Contact Us

For catalog requests, pricing, or partnerships, please visit:
<https://cannabiswow.es>

