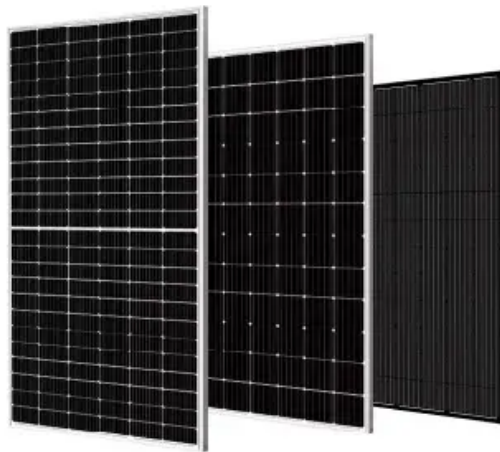


How big is a photovoltaic panel group

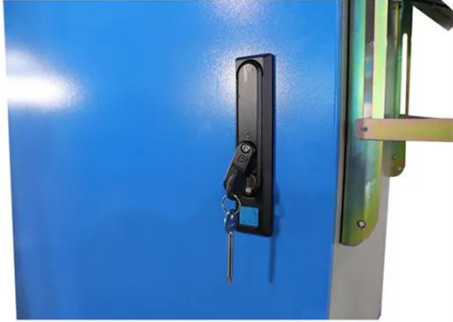


Overview

The standard residential solar photovoltaic panel size you'll see most often is based on a 60-cell configuration, typically measuring about 67 inches long by 40 inches wide. This size offers the best balance between power output, handling ease, and fitting standard roof dimensions. That's basically a 66×39 solar panel. But what is the wattage?

That is unfortunately not listed at all. common installation practices, and 3. Investing in. While solar panels have standardized sizes to help installation companies make installation easier, you can also order larger panels if needed. These panels generally weigh more than 50 pounds and have a 6 x 12 grid.

How big is a photovoltaic panel group



Solar Panel Size: 2026 Detailed Guide

Commercial solar panels are designed for large-scale energy production for factories, solar parks, institutions, and other businesses. Typically, a commercial solar panel is 6.5 x 3.2 feet

...

[Get Price](#)

Standard Solar Panel Sizes And Wattages (100W-500W Dimensions)

The goal here is to get to the average solar panel size by wattage. You can find typical dimensions of 100W, 150W, 170W, 200W, 200W, 220W, 300W, 350W, 400W, and 500W solar panels summarized ...



[Get Price](#)



Solar Panel Size & Dimensions Guide 2025 , Complete Specs

Complete guide to solar panel sizes and dimensions. Compare 60-cell vs 72-cell panels, weights, roof space requirements, and installation specs for 2025.

[Get Price](#)

standard solar photovoltaic panel sizes explained

Discover standard solar photovoltaic panel sizes. Choose the perfect fit for your installation with our expert guide. Learn more today!

[Get Price](#)



How many photovoltaic solar panels are considered a group?

Photovoltaic solar panels are typically grouped based on their configuration and capacity, and a collective grouping often consists of 1. a minimum of two panels, 2. common installation ...

[Get Price](#)

Understanding Solar Panel Dimensions In 2025: A Complete Size Guide

Understanding solar panel dimensions is crucial for planning your solar system installation, maximizing efficiency, and ensuring compatibility with your available space. In this blog, ...

[Get Price](#)



How Big Are Solar Panels: How Panel Size Impacts Your Solar System



So, how big are solar panels? The standard residential solar panel size is 65 inches by 39 inches, has 72 cells, and generates between 250 and 400 watts of electricity. Some of the most ...

[Get Price](#)

Understanding Photovoltaic Panel Sizes - What You Need to Know ...

In this detailed guide, we'll explain how solar panel dimensions correlate with wattage, the different size standards, and how to calculate the best fit for your energy goals.

[Get Price](#)



How Big is a Solar Panel? A Guide to Solar Panel Dimensions

For residential solar panels, the panels measure an average of 65 inches (5.4 feet) by 39 inches (3.25 feet), covering an area of 17.25 square feet. This measurement may vary slightly ...

[Get Price](#)

How Big is a Solar Panel? The Solar Panel Size Guide

For a residential solar panel, size is fairly consistent across manufacturers: 65 inches (1.65 meters) by 39 inches (1 meter) is the average solar panel size that you find on the roofs of houses. That is about ...

[Get Price](#)



Contact Us

For catalog requests, pricing, or partnerships, please visit:
<https://cannabiswow.es>

