

Lithium battery pack voltage can be high or low



Overview

Common lithium-ion cells typically have a nominal voltage of about 3. This range is standard for most consumer applications, including smartphones and laptops. The actual voltage can vary slightly based on the specific chemistry and design of the cell. **Charged Voltage: The Maximum Voltage When Fully Charged** What Is Charged Voltage?

Charged voltage (also called full-charge voltage) is the highest voltage a cell reaches when fully charged. But how do different voltage ratings—12V, 24V, and 48V—compare?

This guide breaks down what you need to know about lithium-ion battery. Understanding the voltage of lithium-ion batteries is crucial to maximizing their performance, safety, and lifespan in consumer electronics, electric vehicles, and renewable energy applications. In simple terms, it's the force that pushes electrons through a circuit, powering everything from electric vehicles to your smartwatch. The higher the pressure, the more water (or in our case, energy) can flow. It determines how efficiently energy flows, directly influencing applications like medical devices, robotics, and security systems.

Lithium battery pack voltage can be high or low



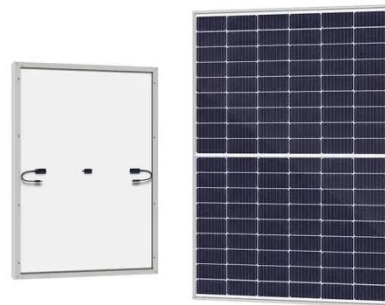
Lithium Battery Voltage Chart

For example, a fully charged lithium-ion cell typically has a voltage of 4.2V, while a discharged cell may have a voltage of 3.0V or lower. Monitoring voltage is crucial for maintaining ...

[Get Price](#)

Comprehensive Guide to Lithium Battery Cell Voltage During ...

Check lithium battery voltage when charging or using to avoid problems like overheating or shorter life. Use a battery management system (BMS) to keep it safe by controlling voltage, ...



[Get Price](#)



How to measure the voltage of a lithium battery pack?

Temperature Effects: The voltage of a lithium battery pack can be affected by temperature. Generally, the voltage decreases as the temperature drops and increases as the ...

[Get Price](#)

What Is Lithium Cell Voltage? Explained Simply

That's why one lithium battery may read 4.2V when fully charged and drop to 3.0V or less when nearly empty. To imagine this, think of a river. The voltage is like the pressure of water flowing ...

[Get Price](#)



Lithium Ion Battery Voltage Explained: Everything You Need to Know

The lithium-ion cell voltage is capable of fluctuating slightly based on temperature, usage, etc. whereas the nominal voltage of the battery always works as an average reference of the ...

[Get Price](#)

What Voltage is Too Low for a Lithium Battery?

Most lithium batteries risk permanent damage below 2.5V per cell. For a standard 3.7V lithium-ion cell, voltages under 3.0V indicate deep discharge. Prolonged operation below this ...

[Get Price](#)



Battery Voltage Explained: Nominal, Charged, Minimum, and Cut-Off ...



Cut-off voltage is the lowest voltage a battery cell should reach before it is considered discharged. Discharging below this level can lead to permanent damage, capacity loss, and battery ...

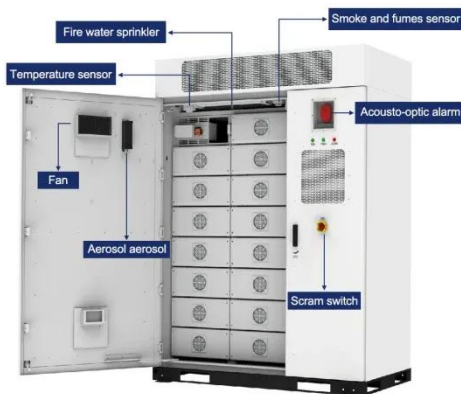
[Get Price](#)

Lithium-Ion Battery Voltage Breakdown: 12V, 24V, 48V Explained

Discover how lithium-ion battery voltage varies at different charge levels and learn how 12V, 24V, and 48V batteries perform across applications.



[Get Price](#)



The Complete Guide to Lithium-Ion Battery Voltage Charts

The ideal voltage for a lithium-ion battery depends on its state of charge and specific chemistry. For a typical lithium-ion cell, the ideal voltage when fully charged is about 4.2V.

[Get Price](#)

Lithium-Ion Battery Voltage: How Many Volts And Types Explained In

What Is the Standard Voltage of a

Lithium-Ion Battery? The standard voltage of a lithium-ion battery typically ranges from 3.0 to 4.2 volts per cell. This voltage range is crucial for the battery's

...

[Get Price](#)



Contact Us

For catalog requests, pricing, or partnerships, please visit:
<https://cannabiswow.es>

