

# The size of the locker can accommodate a ladder



## Overview

---

to store the ladder out of sight when not in use. That's a minimum hatch size of 510mm x 600mm, with an overhang of 235mm (we'll stress enough the importance of ladder safety). The ideal locker size depends on the available space, the items to be stored, and the specific needs of your facility. In this guide, we'll explore key considerations for picking the. Standard lockers are 18 inches deep and 6 feet high. Each locker unit's height depends on how many tiers the lockers have - a 1-tier locker has one 6-foot-high locker, a 2-tier locker has two 3-foot-high lockers, a 3-tier locker has three 2-foot-high lockers, a 4-tier locker has four 1-foot and. dth,lockers often come in 12,15,or 18 inches wide. Wider sizes like 15-18 inches are better for being able to cram in bigger stuff like pu fy winter jackets,sports gear,and bulky backpacks. Elementary schools typically use shorter lockers, while high schools and workplaces.

## The size of the locker can accommodate a ladder

---



### Standard Locker Sizes with Diagram

From here, the idea behind Ladder Locker was formed - a product that would use weight to stop a ladder moving, work on uneven ground and force the ladder to always be positioned at the

[Get Price](#)

---

### Locker Ladder , Wayfair

Leaning at a 90-degree angle but firmly attached to the wall, this ladder shelf can support up to 55 lb of your favorite books, plants, family photos, and other decorations.

[Get Price](#)



### Locker Sizes

This guide will cover the sizes of different locker types, what lockers are usually made of, and what you should consider before installing a set of lockers in any location.

[Get Price](#)

---

### Is the locker large enough to

## accommodate a ladder

From here, the idea behind Ladder Locker was formed - a product that would use weight to stop a ladder moving, work on uneven ground and force the ladder to always be positioned at the

[Get Price](#)



## Choosing The Right Locker Size For Your Needs

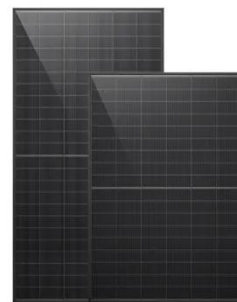
The size of your locker can greatly impact its functionality and usability. In this article, we will explore the concept of " typical locker size " and provide guidance on choosing the right locker ...

[Get Price](#)

## Standard Locker Sizes with Diagram

The height of an individual locker will depend on the number of tiers on the locker wall and how tall the wall is. For one-tier lockers, which are tall rectangular-shaped lockers, the typical height ...

[Get Price](#)



## Understanding The Size Of A Locker: A Comprehensive Guide



Make sure the locker is deep enough to accommodate your tallest item and wide enough to fit your widest item. Secondly, consider the available space for installing the locker. Measure the ...

[Get Price](#)

## Understanding The Typical Locker Size

Understanding the typical locker size is crucial when selecting the right locker for your needs. When it comes to lockers, sizes can vary based on the intended use and the location where ...



[Get Price](#)



## How to Choose the Right Locker Size for Your Facility: A Complete ...

The ideal locker size depends on the available space, the items to be stored, and the specific needs of your facility. By considering these factors, you can select lockers that maximize storage efficiency ...

[Get Price](#)

## Locker Size and Configuration: A Comprehensive Guide

Clear Floor Space: A clear floor space of at least 30 inches (76 cm) wide and 48 inches (122 cm) deep should be provided in front of the locker to allow individuals using wheelchairs or other mobility ...

[Get Price](#)



## STANDARD LOCKERS

Recess Trim - End and top recess trim for lockers are placed in wall recesses with 18-gauge formed steel with a 2-3/4" wide face and are bolted to locker frames.

[Get Price](#)

## Contact Us

For catalog requests, pricing, or partnerships, please visit:  
<https://cannabiswow.es>

