

What is the size of a 40w solar panel



Overview

A 40 W panel is an efficient solution for small-scale energy needs. Its compact size of approximately 26 x 22 x 1. in short, On average a 40-watt solar panel will produce 160-200 watt-hours of power in a full day 40w solar panels are designed to produce 40 watts of power per hour under standard test conditions (STC) which include radiation of 1 kW/m², a cell temperature of 25°C, and no wind But in the real. There are 3 standardized sizes of solar panels, namely: 60-cell solar panels size. That's basically a 66×39 solar panel. 72-cell solar panel. Solar panel size is measured in watts (W) and indicates how much electricity the panel can produce under standard test conditions. Here's the key distinction every homeowner should understand: Most residential solar panels in 2025 come in three main configurations: The most common choice for. Our range of solar panels are constructed from ultra-efficient polycrystalline and have been designed to provide a reliable and cost-effective alternative energy solution for applications where mains power is either not available, or not desirable. Cross-reference: [How to Size a Grid-Connected Solar Electric System](#) [How many Solar Watts do I Need to Power my Home?](#)

Over 179 (GW) of solar capacity is installed nationwide and it's capable of powering roughly 33.

What is the size of a 40w solar panel



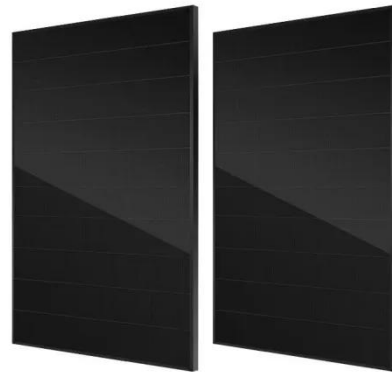
Solar Panel Size & Dimensions Guide 2025 , Complete Specs

In this comprehensive guide, you'll learn everything you need to know about solar panel sizing, from standard dimensions to weight considerations, helping you determine the perfect solar ...

[Get Price](#)

40 Watt Solar Panel: Everything You Need To Know

40W solar panel is enough to recharge your small appliances like cell phones, portable Fans, and LED lights. So in short, you'll only be able to get 200 watts of total power output from your ...



[Get Price](#)



What does 40w solar panel mean? , NenPower

What does 40w solar panel mean? A 40W solar panel refers to a photovoltaic panel that is capable of producing a maximum output of 40 watts of electrical power under optimal sunlight ...

[Get Price](#)

How big is a 40 watt

photovoltaic panel

To calculate the size of the charge controller or regulator for your solar panel use this formula you'll need a 5A. These panels cover an area of 17.62 square feet and weigh around 40 ...

[Get Price](#)



40W Solar panel specifications

40W Solar panel specifications Our range of solar panels are constructed from ultra-efficient polycrystalline and have been designed to provide a reliable and cost-effective alternative energy ...

[Get Price](#)

Standard Solar Panel Sizes And Wattages (100W-500W Dimensions)

The goal here is to get to the average solar panel size by wattage. You can find typical dimensions of 100W, 150W, 170W, 200W, 200W, 220W, 300W, 350W, 400W, and 500W solar panels summarized ...

[Get Price](#)



Solar Panel Sizes and Wattage Explained

Depending on manufacturer and type,



these dimensions are usually available in millimetres which can be easily converted to centimetres or meters. For example, a standard PV ...

[Get Price](#)

Best 40 Watt Solar Panels for Portable Charging and Outdoor Use

These solar panels are designed to be lightweight, foldable, and efficient for camping, hiking, RV trips, and emergency use. Below is a summary table featuring the top 5 highly rated 40W ...

[Get Price](#)

Outdoor Cabinet BESS
50 kWh/500 kWh Battery Storage System
Industrial and Commercial Energy Storage



<p>All In One Integrating battery packs</p> <p>High-capacity 50-500kWh</p> <p>Degree of Protection IP54</p> <p>Operating Temperature Range -20-60°C (Derating above 50 °C)</p>	<p>Intelligent Integration Integrated photovoltaic storage cabinet</p> <p>Rated AC Power 50-100kW</p> <p>Altitude 3000m(>3000m derating)</p>
--	--

40 watt solar panel - 40w solar panel kit for home

Small Solar Panel Specs 40w solar panel
A 40 W panel is an efficient solution for small-scale energy needs. Its compact size of approximately 26 x 22 x 1.2 inches and weight that's around ...

[Get Price](#)



The Ultimate Guide to Solar Panel Size, Weight & Wattage (2025)

Standard residential solar panels are typically around 5.8 feet long by 3.5 feet wide and weigh between 40 to 50 pounds. However, the exact dimensions depend heavily on the panel's ...

[Get Price](#)



Contact Us

For catalog requests, pricing, or partnerships, please visit:
<https://cannabiswow.es>

